 Super Products®

**MUD DOG®**

**VACUUM EXCAVATORS**



**DIG SAFER.**  
**DIG SMARTER.**

800.837.9711 • [WWW.SUPERPRODUCTS.COM](http://WWW.SUPERPRODUCTS.COM)



# Mud Dog®

## AVAILABLE MODELS



### Mud Dog 700

Productive and versatile unit that offers a compact footprint for excavation in urban environments while maintaining power and precision and maximizing payload.

#### > Debris Body

- Debris Capacity: 7 yard
- Unloading: Dump  
50° Dump Angle, capable of dumping into 48" container
- Electric Vibrator

#### > Vacuum System

- 3100 cfm / 18" hg (or) 3700 cfm / 27" hg

#### > Water System

- Water Capacity: 600 gallons
- Water Pump: 11 gpm and 3000 psi

#### > Boom

- Extendable Boom
- 8" Dia., 18' Reach, 270° Rotation, Pivots 10° Down

#### > Dimensions

- Length: 28' 5" (approx.)
- Height: 12' 4" (approx.)

\* Disclaimer: Product photos may include standard and/or optional features

### Mud Dog 1200

Efficient and versatile unit that offers consistent performance and precision for safe excavation during mid to large-scale projects.

#### > Debris Body

- Debris Capacity: 12 yard
- Unloading: Eject  
The industry's safest and most efficient removal of debris
- Internal Body Flush-Out System
- 2' Body Lift for Easy Cleanout

#### > Vacuum System

- 5800 cfm / 28" hg

#### > Water System

- Water Capacity: 1500 gallons
- Water Pump: 18 gpm and 3000 psi
- 705,000 btu/hr Heater
- Heated Exterior Water Lines
- Anti-Freeze System

#### > Boom

- Telescoping Boom
- 8" Dia., 19'-27' Reach, 335° Rotation, Pivots 25° Down

#### > Additional Features

- Heated Aluminum Cabinet, Dual 65,000 btu/hr Heaters
- Polyurethane Coating inside Doghouse

#### > Dimensions

- Length: 37' 1" (approx.)
- Height: 13' 2" (approx.)

### Mud Dog 1600

The largest vacuum excavator in the industry. Unit offers maximum payload and performance for large-scale excavation projects even in the harshest environments. No job is too big or too tough to tackle.

#### > Debris Body

- Debris Capacity: 16 yard
- Unloading: Eject  
The industry's safest and most efficient removal of debris
- Internal Body Flush-Out System
- 2' Body Lift for Easy Cleanout

#### > Vacuum System

- 5800 cfm / 28" hg

#### > Water System

- Water Capacity: 2000 gallons
- Water Pump: 18 gpm and 3000 psi
- 705,000 btu/hr Heater
- Heated Exterior Water Lines
- Anti-Freeze System

#### > Boom

- Telescoping Boom
- 8" Dia., 19'-27' Reach, 335° Rotation, Pivots 25° Down

#### > Additional Features

- Heated Aluminum Cabinet, Dual 65,000 btu/hr Heaters
- Polyurethane Coating inside Doghouse

#### > Dimensions

- Length: 39' 6" (approx.)
- Height: 13' 2" (approx.)

## Standard Features on All Units

### Safety

- Backup Camera
- Body Up Alarm
- Boom Up Alarm
- Debris Body Safety Prop
- Emergency Stop Switch
- Safety Cone Rack
- Tailgate Alarm
- Tailgate Safety Props

### Debris Body

- Industrial Powder Coat Finish
- 14" Stainless Steel Float Ball

### Vacuum System

- Industrial Tapered Cyclone
- Pleated Final Filter
- Positive Displacement Blower
- 8" Dia. Tubing throughout to Prevent Clogs
- Vacuum Pump Hour Meter
- Vacuum Level Gauge

### Water System

- Air Purge System
- Curbside Water Fill

- 100' of ½" Hose Reel
- Water PSI Gauge
- Water Tank; rotationally molded, non-cross linked, polyethylene
- Winter Recirculation

### Boom System

- Remote Greasing System

### Operator Controls

- Wireless Remote Operates Boom Functions, Vent Door, E-stop Switch, Vacuum Speed, Heater, Water Pump, Dump Controls and Water Flow

### Tailgate

- Hydraulic Powered, Full Diameter, Full Opening Flat Rear Tailgate
- Stainless Steel Splash Shield

### Additional Features

- Aluminum Diamond-Plate Toolboxes
- Light Package: Front Strobe, Arrow Board, Directional Signals, Dual Boom Lights, Boom Cradle Light, Exterior Cabinet Light

ECO



ECO

## Single Engine Design

All Mud Dog models feature a single engine design which offers:

- Lighter Weight
- Up to 40% Less in Fuel Use
- 15% Lower Operating RPM

# OPTIONAL FEATURES

## Optional Features

### Mud Dog 700

- Cold Weather Package: 400,000 btu/hr water heater, heated exterior water lines, anti-freeze system, heated water pump cabinet

### Mud Dog 1200 & 1600

- Dual Tire Chain Racks
- Sludge Pump

### All Units

- ACCULEVEL® Load Sensor System
- Additional Lights
- Air Excavation Package
- Grounding System
- Multiple Truck Chassis Configurations
- Safety Cameras
- Safety Cones
- Scale System
- Signboards
- Wheel Chock Holder

OPTION

## Air Excavation Package

Add the **Air Excavation Package (185 cfm x 175 psi)** to utilize compressed air when digging. Air excavation is ideal for more sensitive debris removal applications where any sort of water introduction would be counterproductive or damaging.



OPTION

## Increase Your Payload

Add the **Tag Axle** to the Mud Dog 1200 to maximize payload and increase jobsite productivity. This option stretches the overall unit length by 2' while increasing payload capacity.



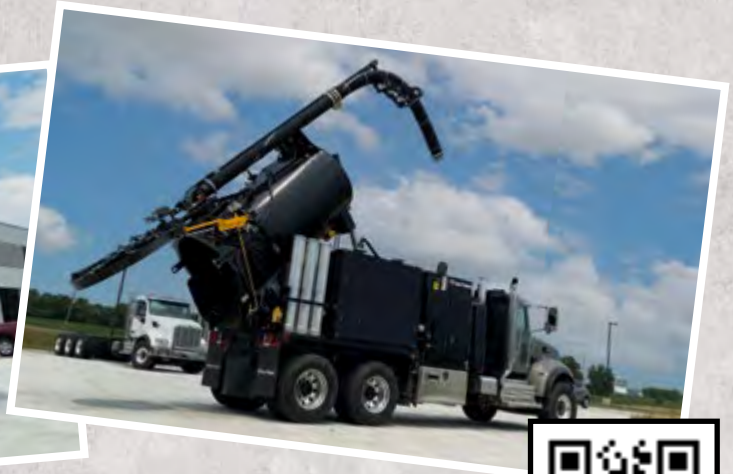
SAFETY

SAFETY

# THE MUD DOG LINE UP



**MUD DOG<sup>®</sup> 700**



**MUD DOG<sup>®</sup> 1200**



**MUD DOG<sup>®</sup> 1600**



**Super Products<sup>®</sup>**  
An Alamo Group Company